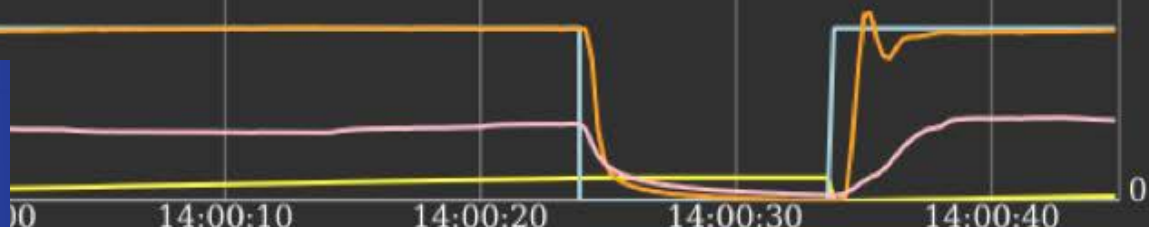


T-Series TYPE DOSING PUMPS



ENGINEERED FLOW PRODUCTS & SYSTEMS

Flowlink BV is an engineering and technical trading company which is committed to deliver and support high-quality products in the chemical, petrochemical, plastics and food industry. Together with our partners we design and develop solutions in the field of fluid handling and fluid transport.

Our services:

- Pump selection and delivery
- Redesign of pumps for use in your situation
- Process technology
- Service and maintenance

Our products:

- Gear Pumps
- Static Mixers
- Heat-Exchangers
- Dosing and mixing systems
- Continuous Reaction Systems

Process Technology:

- Process Intensification
- Additive/Gas injection in polymers
- Polymerization
- Batch to Continuous transitions

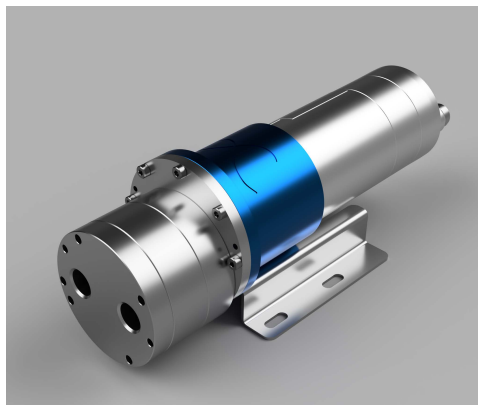
Because we understand that no installation and process requirement is the same we gladly work with you to find the right solution for your application.

Flowlink BV
Minervum 7446-A
4817ZG Breda
Nederland

Tel: +31 76 5289844
E-mail: info@flowlink.nl
Internet: www.flowlink.nl

T-Series Pump

The Flowlink dosing pump is a versatile pump for accurate and reliable dosing applications. The pumps are magnetic coupled resulting in leak-free operating.



T-Series Pump with BLDC motor

Connections

- Power : 24/48VDC (nom. 5,4 A)
- Speed control : 0-10V
- Product : 3/8" - 1/2" - 3/4" NPT

Wetted Material

The T-Series pumps can be executed with various materials to handel aggressive chemicals. For food applications FDA approved materials can be used.

Materials are amongst others:

Housing: SS316, Hastelloy C276, Titanium

Gears: PEEK, PPS, PTFE

O-rings: Viton, PTFE, EPR

Magnets: Ceramic / Samarium Cobalt (Encapsuled in PPS, PEEK or Welded)

Optimal control

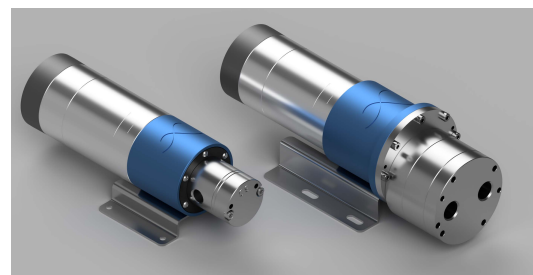
The dosing pumps are executed with a programmable brushless DC motor making the pumps suitable for application from 100 up to 4.000 RPM. Speed control can be done via the 0-10 volt connection. The motor control electronics are integrated in the motor.

Modular layout

Dependent on the requirements the pumps can be executed in various executions. Pump sizes and wetted materials, as also the magnetic coupling can be adjusted to the task at hand. T series pumps have capacities to 2.460 LPH and differential pressures up to 17.2 bar, with a maximum system pressure rating up to 34.5 bar without speed reduction. The Samarium Cobalt magnets are rated to 3,4 Nm of torque. The pumps can be used from -50°C up to 176°C, dependent on the execution.

Pump Size	Max. Flow (LPH)	Max. diff pressure (bar)
TXS-2.6	518	17,2
TXS-5.3	1056	10
TXS-7.9	1575	6,6
TWS-8.0	1593	10,3
TWS-12.0	2460	8,3

Pump size table



The Flowlink T and D-series pumps